

FLEXIBLE FLOOR FOR AREAS WITH HIGH DEMANDS



CAN BE APPLIED TO DIFFICULT
AND INSUFFICIENT AREAS
SUCH AS SAND, SOIL AND GRASS.
FOR ARMED FORCES IN TENT
AND IN THE FIELD





FLEXIBLE FLOOR AS SURFACE IN THE FIELD

Flexible Solid Floor – the revolutionary solution for on-the-go repairs of tanks and vehicles right in the field. Our innovative surface is designed to adapt to any terrain, providing a stable platform for maintenance operations wherever you are. Each Flexible baseplate seamlessly connects to the next with our intuitive duct overlay/support system. With a simple slide and lock mechanism, assembly is quick and effortless, allowing you to focus on the task at hand.

When deployed as a Solid Floor Surface in the field, our system ensures stability and durability. Depending on the ground surface, the outer baseplates are securely anchored using U-Profiles in conjunction with Earth Anchors, providing unmatched reliability even in challenging environments. Experience the convenience and reliability of Flexible Solid Floor for yourself – the ultimate solution for mobile repair operations. Trust in a surface that adapts to your needs, so you can get the job done efficiently, no matter where duty calls.



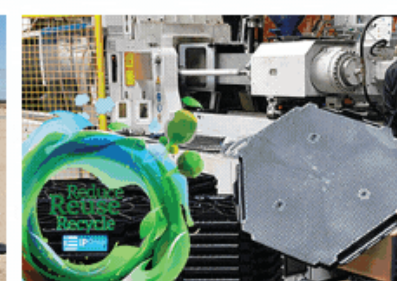
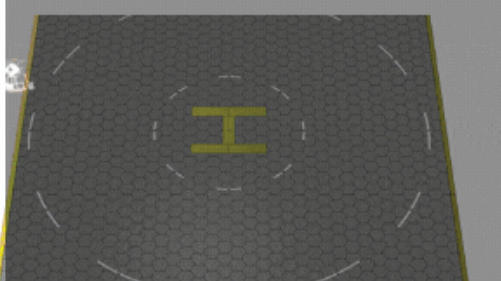
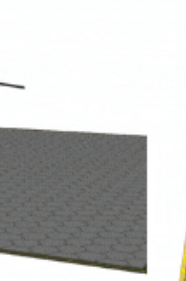
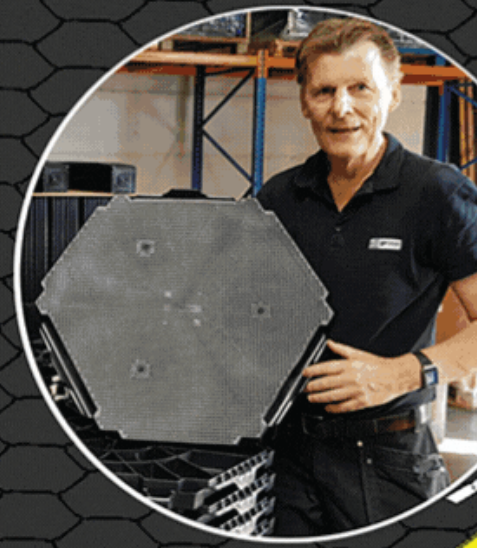
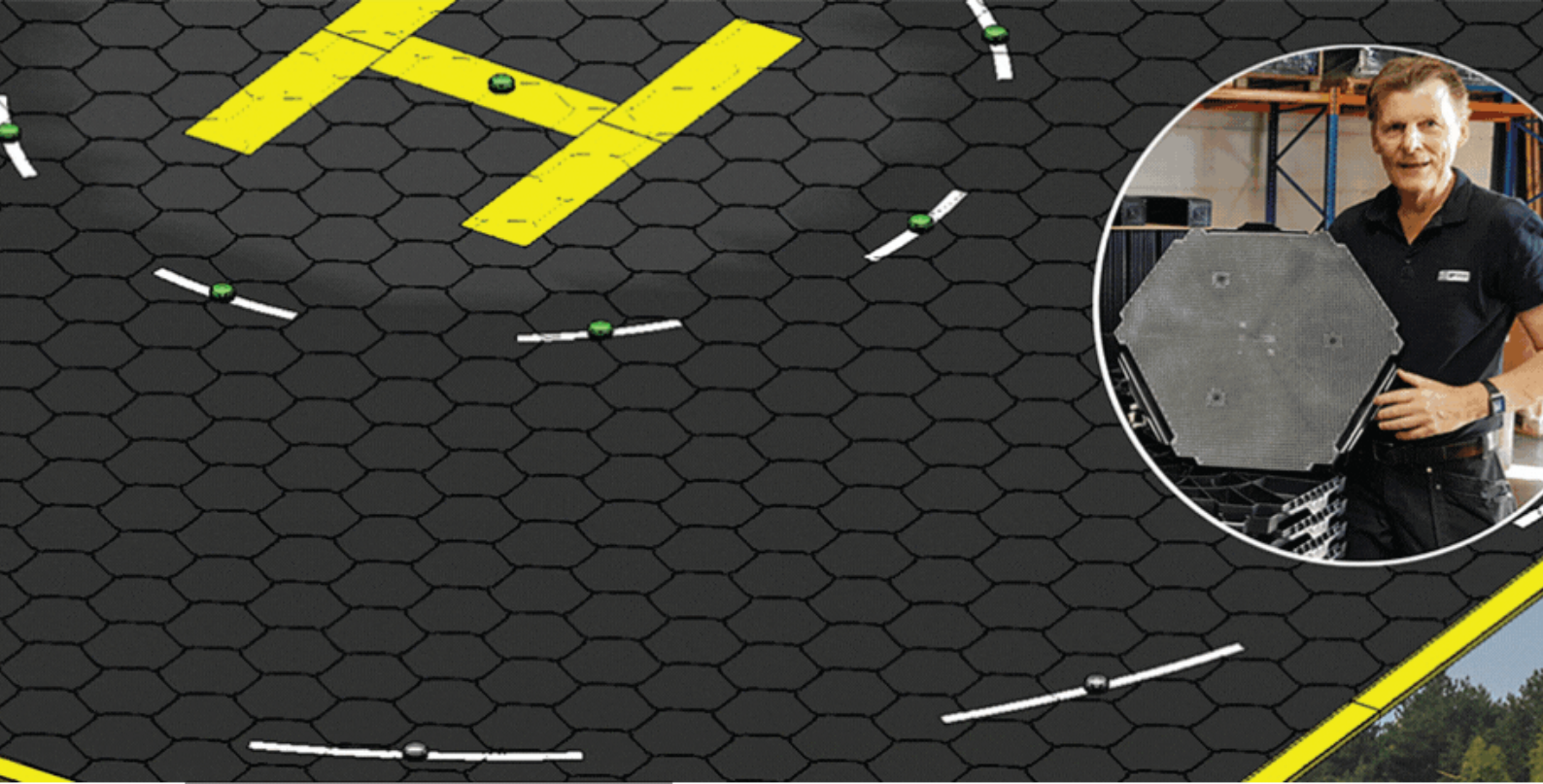


FLEXIBLE SOLID FLOOR FOR
TANK WEIGHT 40 000 KG

FLEXIBLE FLOOR IN WORKSHOP

The Unique Design and Connection of Flexible Solid Floor provides the floor concept a tremendous strength and versatility, without the necessity of adding significant amounts of material or weight Use Flexible Solid Floor to protect the floor on all kind of surfaces. Even the heaviest tanks can be repaired on the floor.





HELICOPTER LANDING PAD

Flexible Airborne Helipad is improving your landing field for better landing conditions in difficult areas. The Flexible Helipad is light enough to be "air portable". Each Heliplates is connected to each other with a user-friendly duct overlay/support system. Simply slide each baseplate next to another baseplate section, where it is easily "locked" into place. Depend on the ground surface, the outer baseplate is anchored with special ground screw. The Helicopter Landing Pad has a load capacity of 20 000 kg per m².



EARTH ANCHOR FOR HELICOPTER LANDING PAD



EARTH ANCHOR MUST BE SELECTED
ACCORDING TO THE CORRECT
CONDITIONS IN THE GROUND SURFACE

EASY TO ASSEMBLE.



STEP BY STEP

MANUALLY ASSEMBLE EARTH ANCHOR



1. MARK OUT EARTH ANCHOR POSITION
SPACING BETWEEN EACH EARTHANCHOR DEPENDING ON THE
GROUND SURFACE



2. SIGNAL DRILL
DRILL ALL THE HOLES AND EXPAND WITH ONE CIRCULAR MOTION.



3. PLACE THE EARTH ANCHOR
SCREW BY HAND THE FIRST STEP.

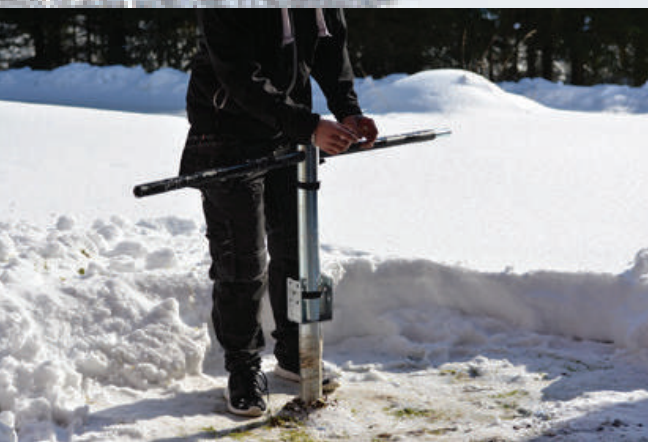


4. ASSEMBLE THE GEAR 1:20
ATTACH THE TELESCOPIC ARM TO THE GEAR AND ATTACH THE
MACHINE ON TOP OF THE GEAR



5. ASSEMBLE THE GEAR 1:20

ATTACH THE GEAR TO THE FIRST EARTH ANCHOR, ASSEMBLE A BRACE ON THE RIGHT SIDE OF THE TELESCOPIC ARM, THEN SCREW DOWN. THEN USE EXCISTING ONES AS A BRACE FOR THE NEXT ONE.



6. ASSEMBLE THE HAND TOOL

ALTERNATIVLY INSERT THE HAND TOOL AND SECURE THE ARMS TO THE HAND TOOL TO ACHIEVE INCREASED LEVERAGE.



7. ASSEMBLE THE ADJUSTEBLE TOP BEAM

ASSEMBLE THE TOP YOU WANT / EXTENSION INTO THE EARTH ANCHOR



STRONG, FLEXIBLE AND EASY ASSEMBLED!
REPLACE CONCRETE IN THE FIELD



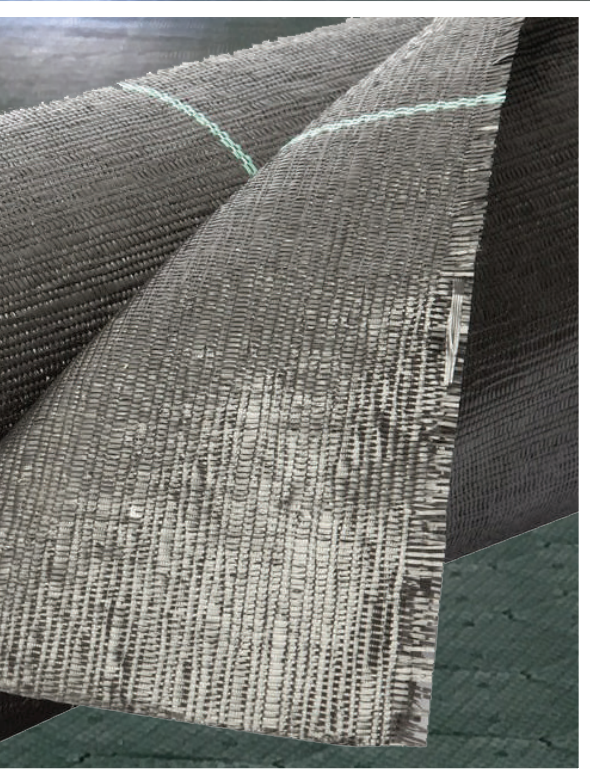
DESIGNED TO BE RAPIDLY DEPLOYED AND
WITH LITTLE TO NO GROUND PREPARATION

FOUNDATION FOR WAREHOUSE, VEHICLE
MAINTENANCE TENTS, PORTABLE ACCESS
ROADS ETC.

USE GEOTEXTILE UNDER FLEXIBLE FLOOR
TO PROTECT AGAINST COLD AND MOISTURE



TIME OF INSTALLATION/PERSON
APPROX. 100 m²/h



WHEN ASSEMBLY AND CONNECT THE TILES WITH "OVER-UNDERLAY", YOU ACHIEVE A VERY GREAT STRENGTH AS THE FLOOR TILES SUPPORT EACH OTHER ON 6 SIDES

ASSEMBLE THE FLOOR SYSTEM WITHOUT ANY USE OF TOOLS. THERE ARE NO SHARP EDGES ON THE FLOOR TILES WHICH MAKE IT SMOOTH AND SAFE TO ASSEMBLE



CBR (CALIFORNIA BEARING RATIO)

The FLEXIBLE SOLID flooring System can be placed even on grounds with very low CBR values, e.g. clay etc.

The soft ground material will fill up the underneath rip design of the elements to further increase element stability. Important is that the ground is not sinking such as moor, swamp land, etc.

The floor tiles create a "bridging-effect" over the laid out ground. If there is a hole underneath the element may bridge it completely or bend into the whole depending on the size of hole and load. After the vehicle has passed over the element it will bounce back. The driveway should be closed also in width to have the best possible shear force performance especially if the driveway is going up and down in longitudinal direction and eventually also has a transversal angle.





THE MULTIPURPOSE CONCEPT

With Flexible Solid Floor System, you get a unique floor with several fields of applications. The concept is ideal floors even in areas with very high demands. It's flexible and easy mounted ground protecting mats with high sustainability. The interlocking floor tiles are made from strong plastic and can be applied to all types of outdoor foundations, from sand and dirt to grass and soil.

Flexible Solid Floor is a completely modular floor concept, interchangeable and expandable and supports the weight of large trucks, forklifts, and other heavy equipment. Each tile is durable, easy to clean, slip-resistant, and contains UV additives for longer outdoor life. It is unique for using as **Landing Pad for Helicopter** in the fields and. With different type of earth anchor the landing pad will be anchored on the end plates of the landing pad

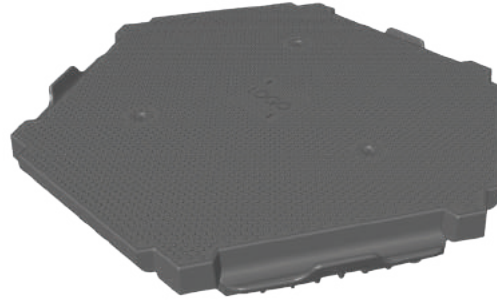
The design makes modular flooring easy, and you still get the stability of a good strong floor. Its flexibility and strength make these ground protecting mats perfect for store units, pavilions and even to build temporary roads where the heavy vehicle can operate. Flexible Solid Floor is optimal to replace concrete in the fields. And of course, in all kind and sizes in tent. It is unique to protect all kind of surfaces and is optimal to use.

ON ALL KIND OF SURFACE



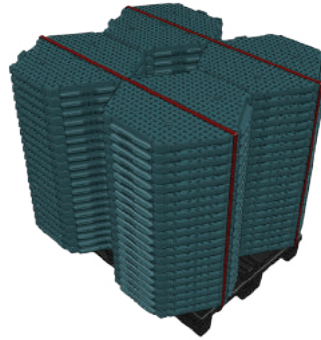
HEAVY TRUCK AND
EXCAVATOR 25 500 KG

TECHNICAL INFORMATION



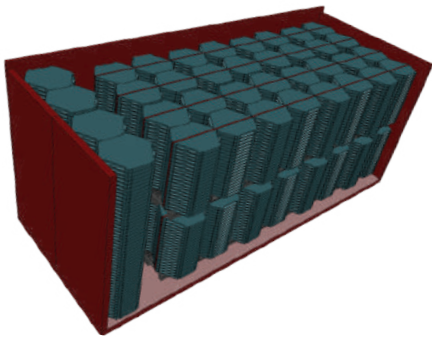
FLEXIBLE SOLID FLOOR HEAVY DUTY

- Material: Polyolefins
- Weight load: 20 000 Kg / m²
- Length: 630 mm
- Width: 575 mm
- Height: 50 mm
- Weight/tile: 3,1kg
- Weight/m²: ca 11,5 kg
- Colour: Black / Dark Grey
- Temperature: -30 ° C to + 70



LOADING ON A PALLET FLEXIBLE SOLID FLOOR

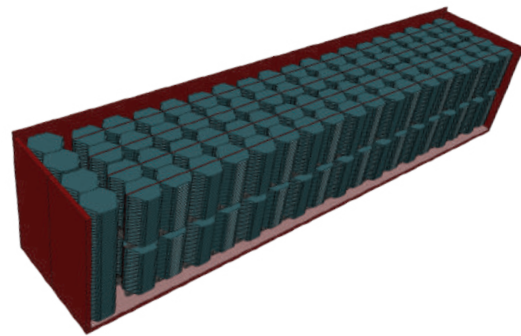
- 84 pcs base tiles (22.68 m²)
- 1250 x 1135 x 1200 mm (Length x Width x Height)
- Weight pallet: 260 kg
- Double stack two pallets to a total height of 2400 mm



LOADING 20FT CONTAINER

FLEXIBLE SOLID FLOOR HEAVY DUTY

- 1280 pcs base plates (345,6 m²)
- Weight container: 1280 pcs x 3,1 kg = 3968 kg + pallets
- 1 Pallet: 115 cm high (20 tiles high) = 80 pcs/pallet = 21,6m².
- Totally 16 pallets stacked á 21,6 m² = 1280 pcs = 345,6 m².



LOADING 40FT CONTAINER

FLEXIBLE SOLID FLOOR HEAVY DUTY

- 3024 pcs base plates (830,5 m²)
- Weight container: 3024 pcs x 3,1 kg = 9375 kg + pallets
- 1 Pallet: 115 cm high (20 tiles high) = 80 pcs/pallet = 21,6m².
- Totally 36 pallets stacked á 21,6 m² = 2880 pcs = 830,5 m².

IN OUR RANGE OF FLEXIBLE FLOOR WE CAN OFFER LIGHT DUTY
WITH WEIGHT LOAD 5000 KG PER M²



www.ip-group.com

IPG Intelligent Packaging Group

Skallebackavägen 24

302 41 Halmstad, Sweden

Tel: +46 35 102480

info@ip-group.com

