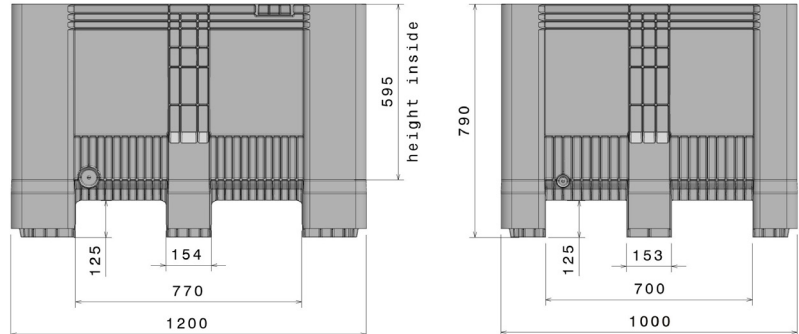
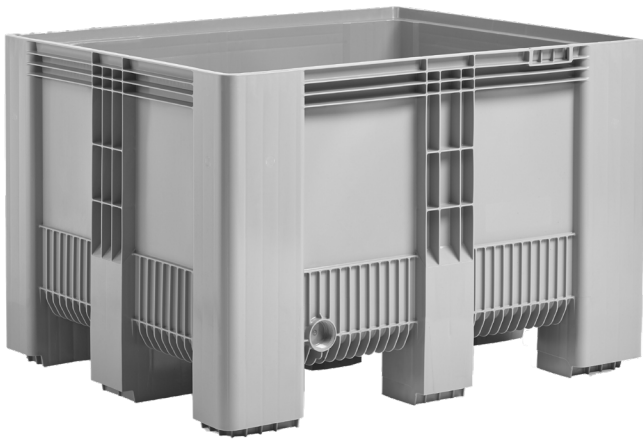


IP-SB-3-12010CW9F




1200 x 1000 x 790 mm / 610 L



Art.no: IP-SB-3-12010CW9F/610L

Technical Data:



Dimension mm:	1200 x 1000 x 790	Volume:	610 L
Weight :	40,5 kg		
Material:	PE		

Load capacity (kg)	 Static: 5000 kg	 Holding capacity: 700 kg	 Dynamic: 1200 kg
--------------------	---	--	--

Characteristics:

Colour: Light grey	Manufactured in one piece
Runner: 9 feet	Drain port (option)
Stackable	Resident to most chemicals and cleaning agents
Temperature stability: -30° - + 40°	Food safe. HACCP compliant
Palletbox is based on DIN EN 13626 and DIN EN ISO 12048	RFID transponder and lid

Loading capacity:

 Container	Container 20ft: 30 Container 40ft: -	Container 40ft HC: 84 Conventional Truck 45ft HC: 104
 Truck	MEGA Truck: 104	JUMBO Truck: 112-120

Labeling:

Customised printing and numbering available on request depending on quantity. Position upon consultation.

